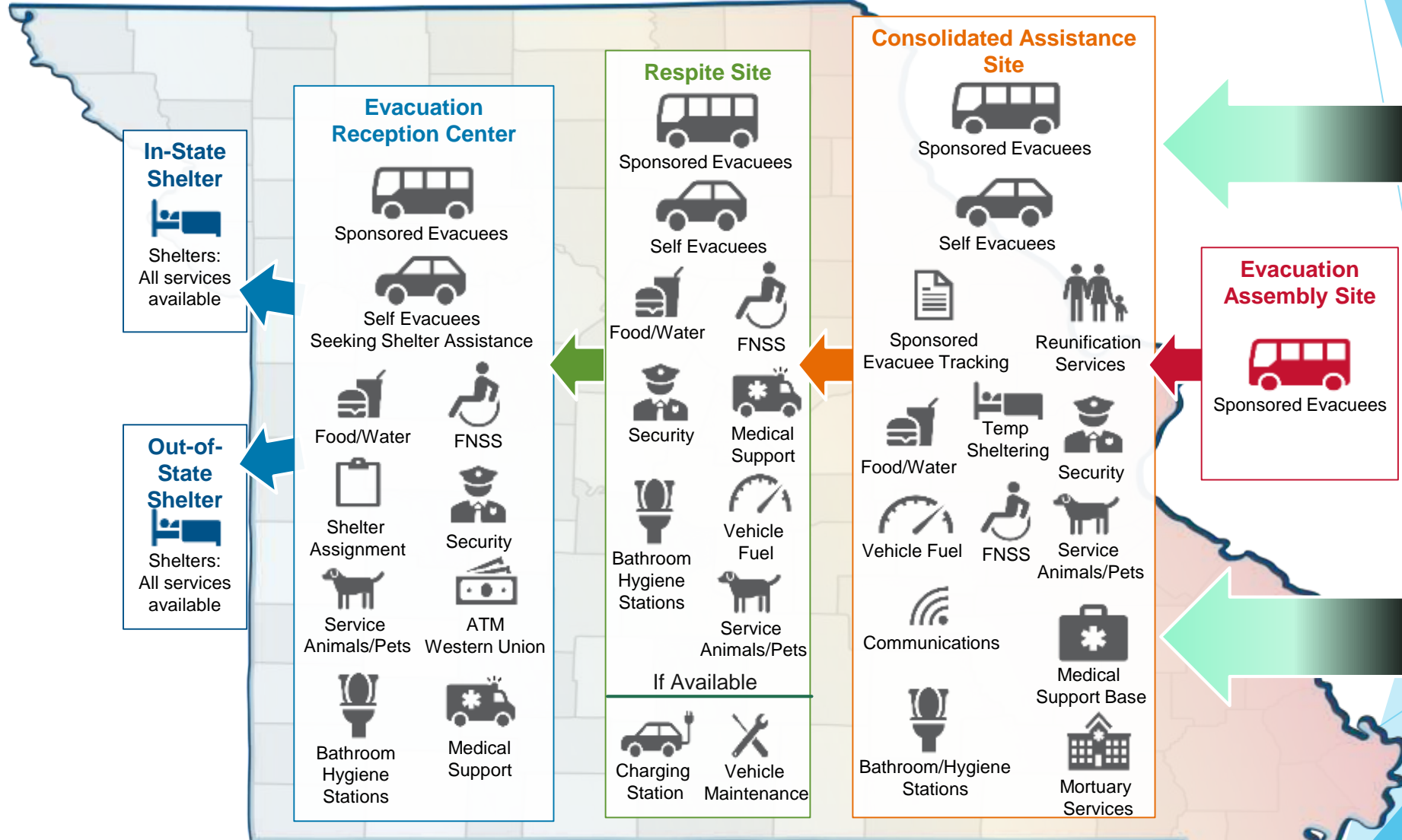


# Evacuation Assembly Site Field Operation Guide (FOG)

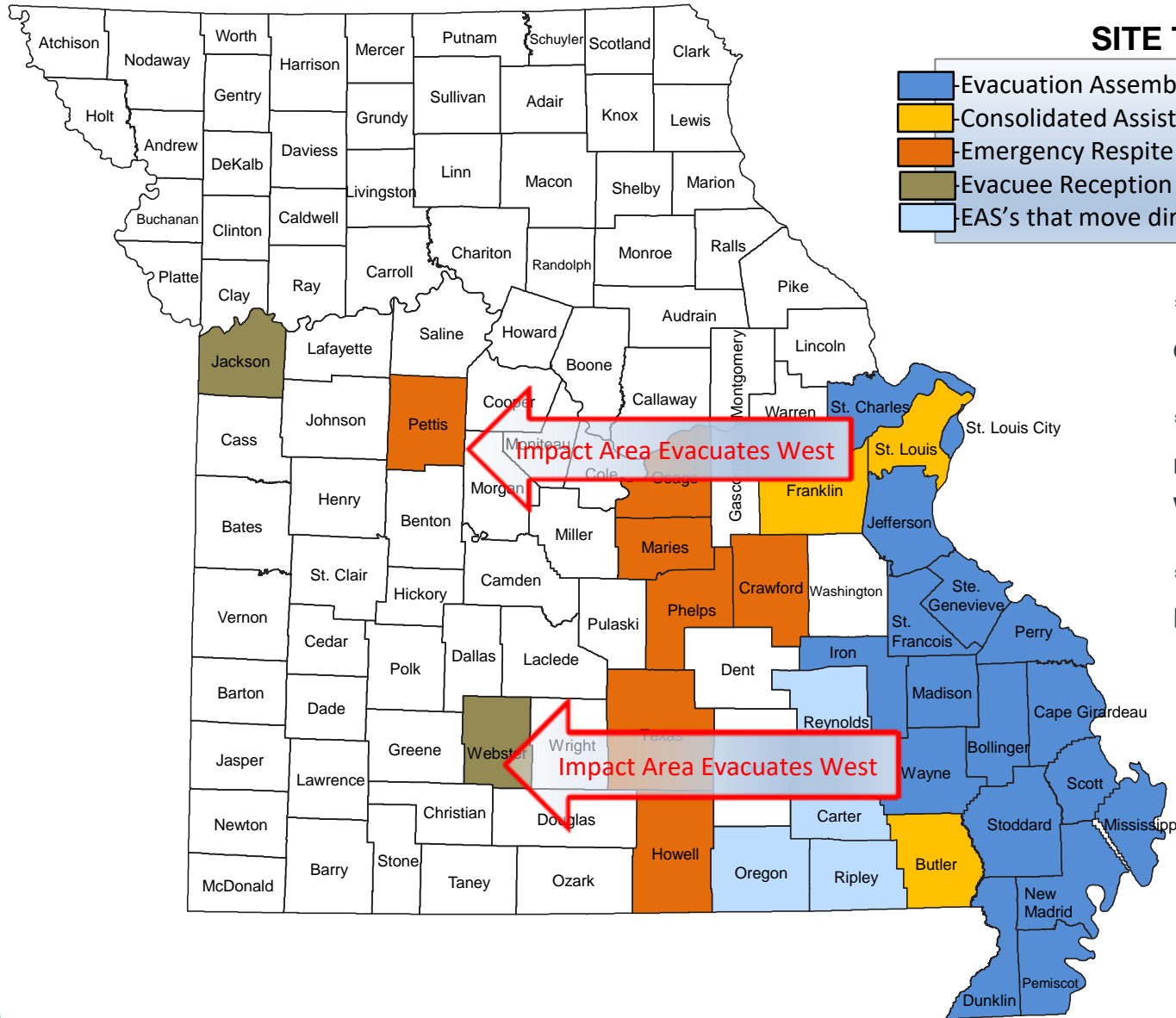
New Madrid Seismic Zone  
Evacuation Plan

# Evacuation Concept of Operations



Localized evacuation will be the responsibility of the local jurisdiction. Once a regional evacuation has been implemented by the EMT, the overall concept of operations is outlined in this graphic. Throughout this process, the EMT and the local EMDs will coordinate efficient deployment of resources, utilization of available evacuee shelter capacity, and effective modifications to evacuation routes, as necessary.

# Evacuation Site Locations



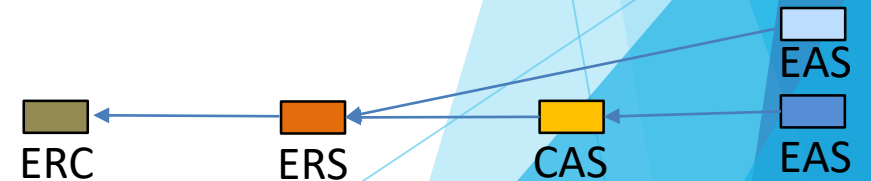
## SITE TYPE

- Evacuation Assembly Site (EAS)
- Consolidated Assistance Site (CAS)
- Emergency Respite Site (ERS)
- Evacuee Reception Center (ERC)
- EAS's that move directly toward ERC

**\*These are all probable Evacuation Site locations; however, the effects of the event will dictate the actual locations for these site locations.**

**\*The Evacuation Management Team (EMT) will coordinate with regional/local emergency managers for which EASs move to a CAS and which ones move directly to an ERC.**

**\*St Louis County is the primary Northern CAS location with Franklin County being the alternate location.**



# Evacuation Assembly Site Field Operation Guide or FOG

## ▶ Purpose

- ▶ To provide local governmental officials within the highly impacted counties with a plan to provide life-sustaining measures for its residents following a catastrophic earthquake along the New Madrid Seismic Zone.
- ▶ Developed by a group of local, state and federal Mass Care subject matter experts.
- ▶ Provides:
  - ▶ A Planning Document
  - ▶ Training Aids
- ▶ Exercise will be developed based on the EAS FOG

# Field Operations Guides Time Line

- ▶ Complete EAS FOG by April 2023
- ▶ May 2023 Begin Work on Consolidated Assistance Site FOG
  - ▶ Complete by end of December 2023
- ▶ January 2024 Begin Work on Respite Site FOG
  - ▶ Complete by August 2024
- ▶ September 2024 Begin Work on Evacuation Reception Center FOG
  - ▶ Complete by February 2025

# Questions?

Melissa Friel

Preparedness Division Manager

Missouri State Emergency

Management Agency

[Melissa.Friel@sema.dps.mo.gov](mailto:Melissa.Friel@sema.dps.mo.gov)