



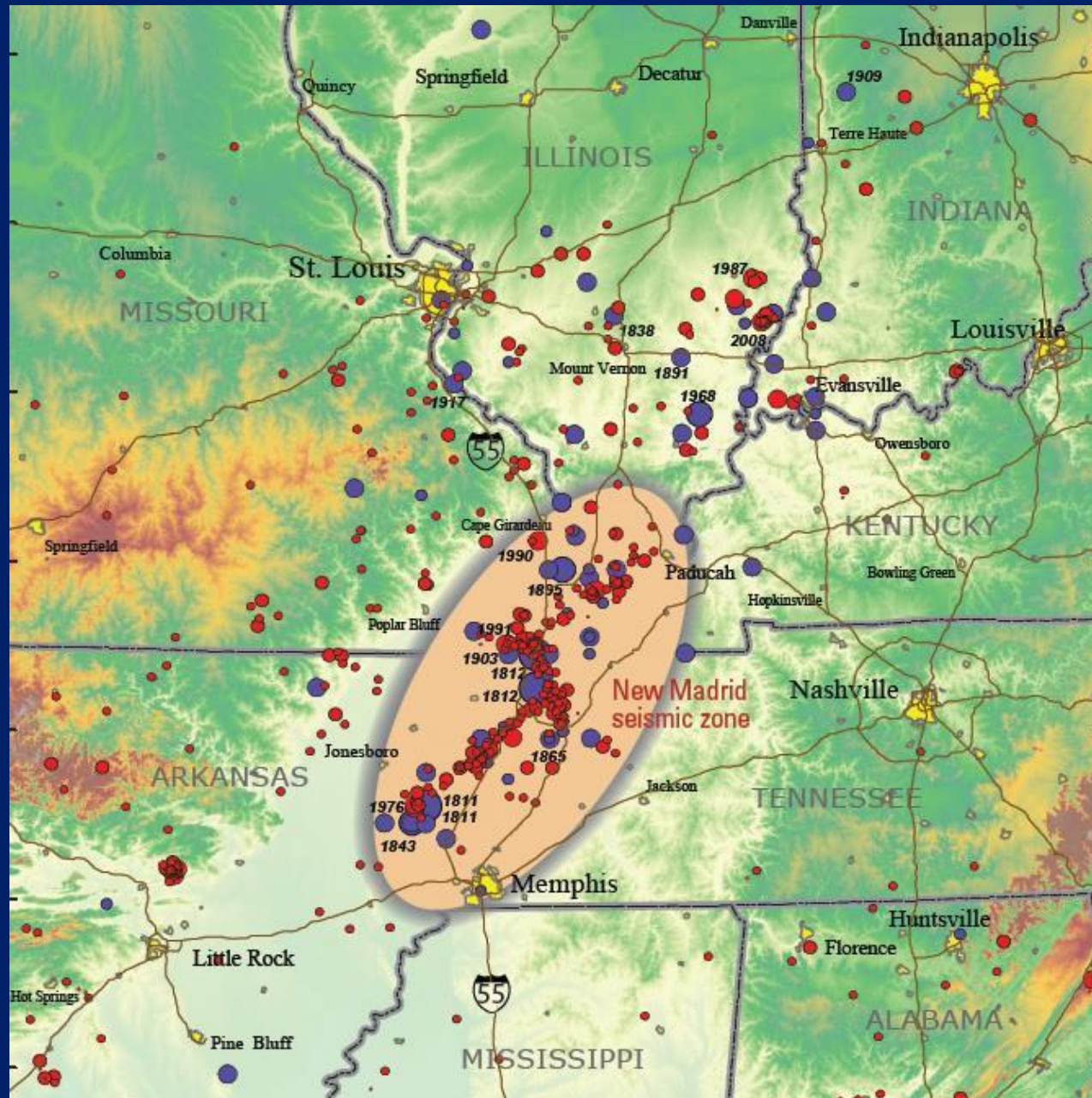
MISSOURI DEPARTMENT OF
**HEALTH &
SENIOR SERVICES**

New Madrid Earthquake Patient Movement

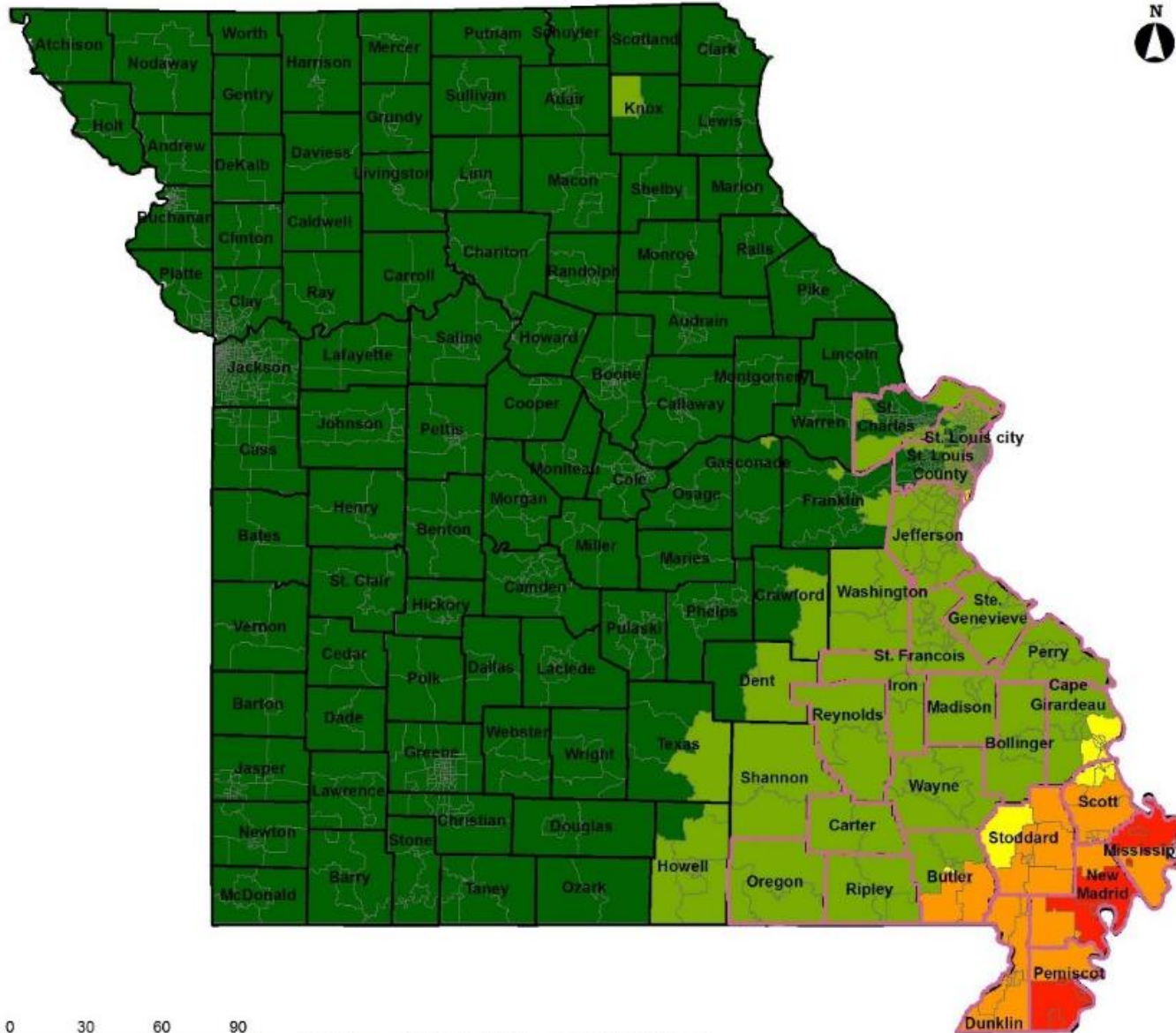
John Whitaker
Public Health Emergency Response Coordinator

Missouri Disasters





Missouri Expected Shaking Intensity



Data Layer / Map Description:
Overview of the area affected by the event.

Legend

- X - Extreme
- IX - Violent
- VIII - Severe
- VII - Very Strong
- VI - Strong
- Impacted Area

0 30 60 90 Miles

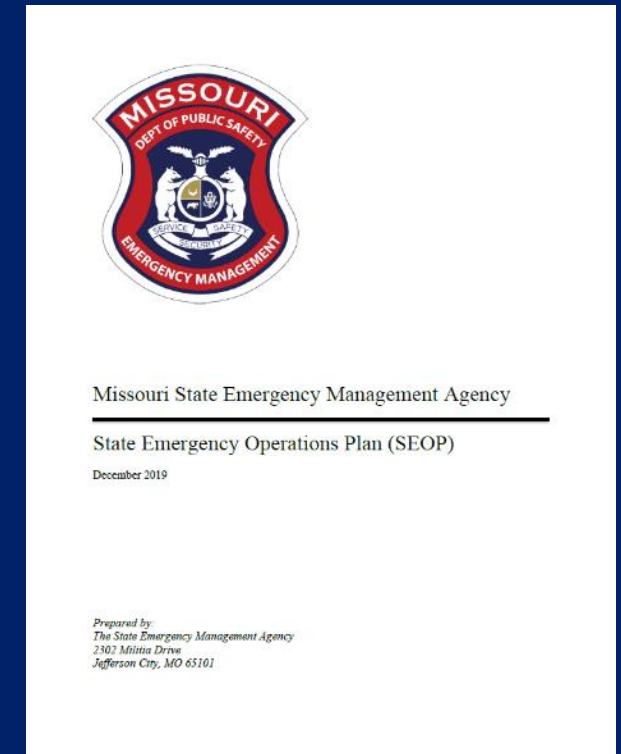
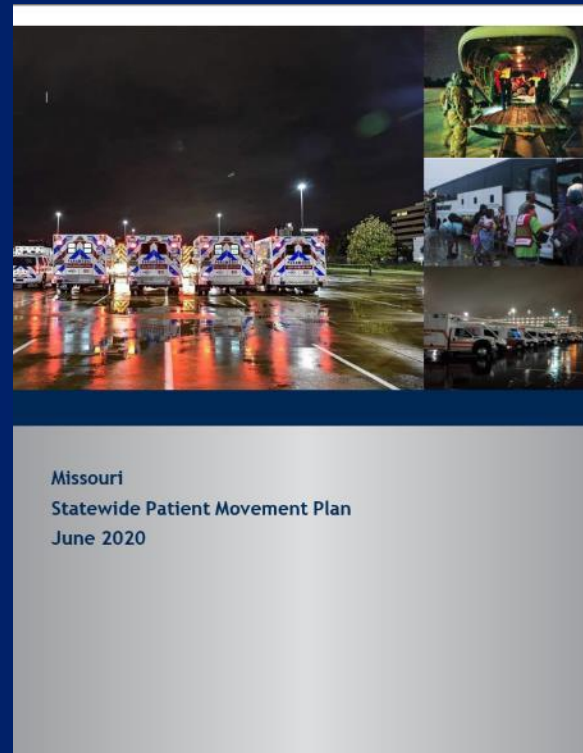
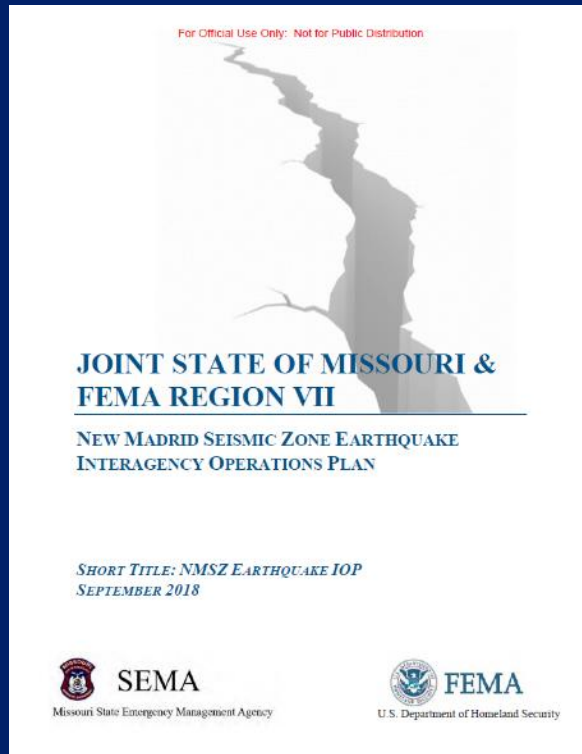
Data Sources: FEMA, Esri, Region 9 OPLAN, MAE Center

Map Created by: David Adjuk (Planning Branch - Response)

Initial Map Creation: (02 June 2018, 1400 EDT)

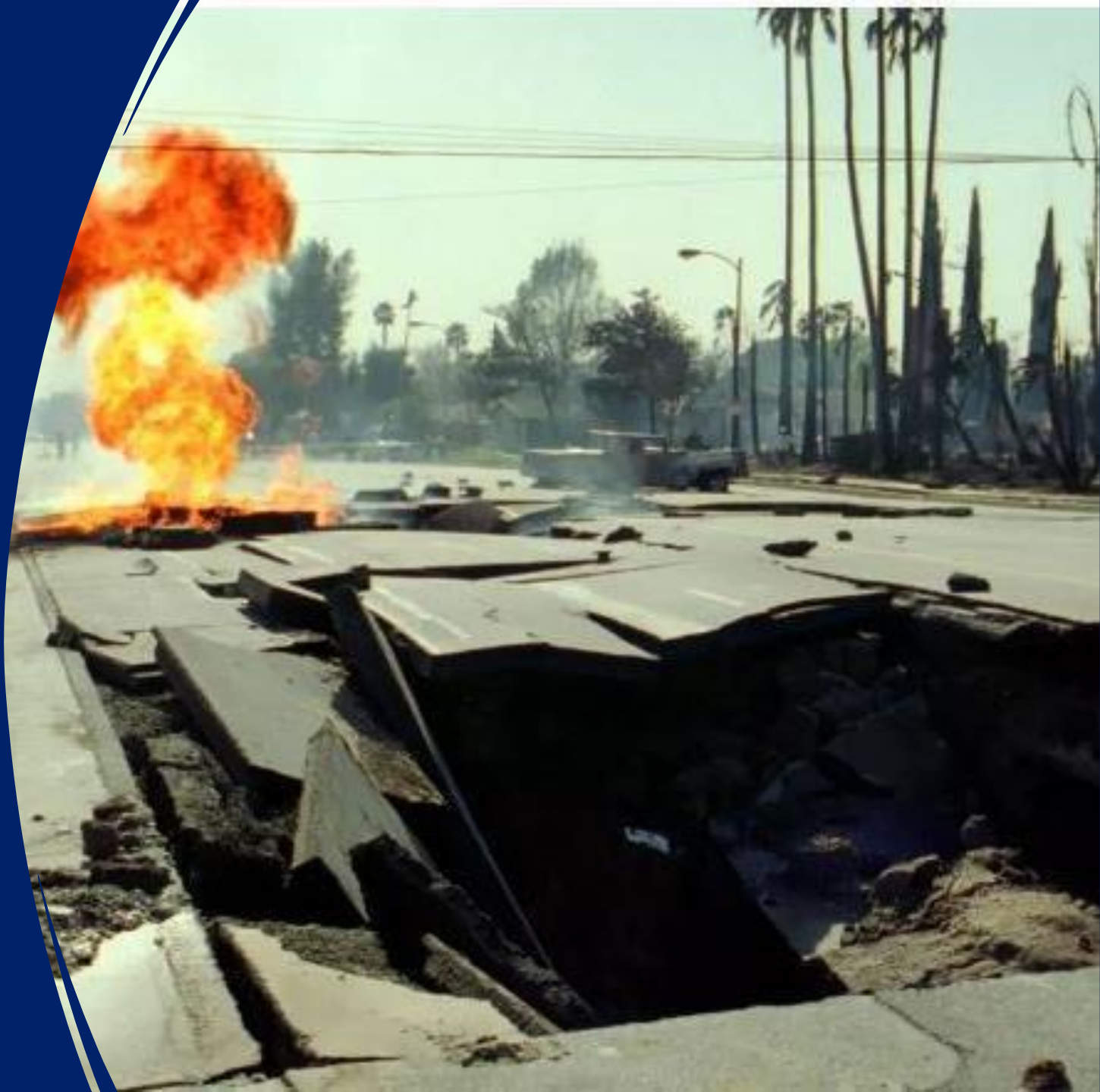
Coordinate System: WGS 1984 World Mercator

Existing Plans



7.0+ NMSZ EQ Infrastructure Assumptions

- Roads and Bridges Damaged
- Electrical, Water, Gas, Wastewater, & Communication services unavailable for days, weeks, or months
- Many buildings will be damaged and unsafe including healthcare facilities
- Aftershocks may continue for weeks or months



Healthcare Assumptions



Hospitals in and adjacent to the impact zone may be damaged and without utilities. Some will require complete evacuation.



Missouri Injury numbers may exceed 10,000



Local EMS will be quickly overwhelmed and communications with hospitals will be limited. EMS Mutual Aid will be activated immediately.



MO DMAT-1, MONG, and federal assistance will be requested.



Air Ops activation and coordination will be essential.



Patients will be moved westward within Missouri and to other states

Response Assumptions

State and Federal Disaster Declarations will occur quickly

Missouri State Emergency Management Agency (SEMA) will activate State Emergency Operations Center (SEOC)

State assets will be deployed quickly

Multiple states will be requesting federal assets.

Local responders may be on their own for 24-48 hours minimum

Missouri Patient Movement Plan

- Enhances existing organization Emergency Operations Plans
- Each organization is responsible for keeping track of patients transported or treated
 - **EMS, Hospitals, Clinics, Mobile Field Units**
- Healthcare Coalitions (HCCs) are hub for situational awareness and resource coordination
 - **HCCs are also tasked with collating patient tracking info**
- Coordination with Emergency Management to understand needs
- State-level ESF-8 Coordination for Common Operating Picture

State Assets and Resources

- **State Emergency Management Agency**
 - Coordination hub, Generators, pumps, heavy equipment, etc.
- **Missouri National Guard**
 - Helicopters, heavy equipment, medical staff
- **Missouri DHSS Emergency Response Center**
 - Healthcare information coordination
- **Missouri Disaster Medical Assistance Team (MO DMAT-1)**
 - Mobile Emergency Room and Hospital Units
- **Missouri Disaster Mortuary Team (MO DMORT)**
 - Fatality processing, victim identification and family assistance



Federal Assets and Resources

- FEMA and HHS Regional Coordinator Staff
- National Disaster Medical System (NDMS)
 - **Fixed wing assets, medical staff**
- Federal Medical Station (FMS)
 - **Temporary medical shelters**
- Strategic National Stockpile
 - **Medical supplies and equipment**
- Federal Ambulance Contract
 - **Access to EMS Strike Teams from other states**

Patient Movement Challenges

During initial stages of disaster life safety is most important

Documentation is secondary

Chaos is expected

The number of injured needing transport will be very large

Patient Confidentiality & HIPPA Regulations result in reluctance to share data

No statewide standard for Patient Tracking

No single agency is responsible for family reunification

DHSS Emergency Response Center:

**1st Contact for DHSS Resource Requests
Or Information**

1-800-392-0272

OR

1-573-751-5152

DRMS@health.mo.gov