

**ACCESS AND FUNCTIONAL  
NEEDS PLANNING IN MISSOURI**

# Never Under-Estimate the Power of Planting a Seed



# Missouri – A Look Back

## 1997

- Missouri established a Special Needs Task force with over 50 members
- SEMA provided training to emergency management directors and others serving populations with special needs
- Missouri Department of Health and Senior Services developed Standard Operating Guidelines for Special Needs Sheltering

# A New Name—A New Focus

**2010**

- FEMA released its Functional Needs Support Services Guidance
  - More holistic definition of access and functional needs
  - Strong focus on integration and inclusion
- Emphasis on planning for individuals with access and functional needs in disasters

# Missouri's Efforts

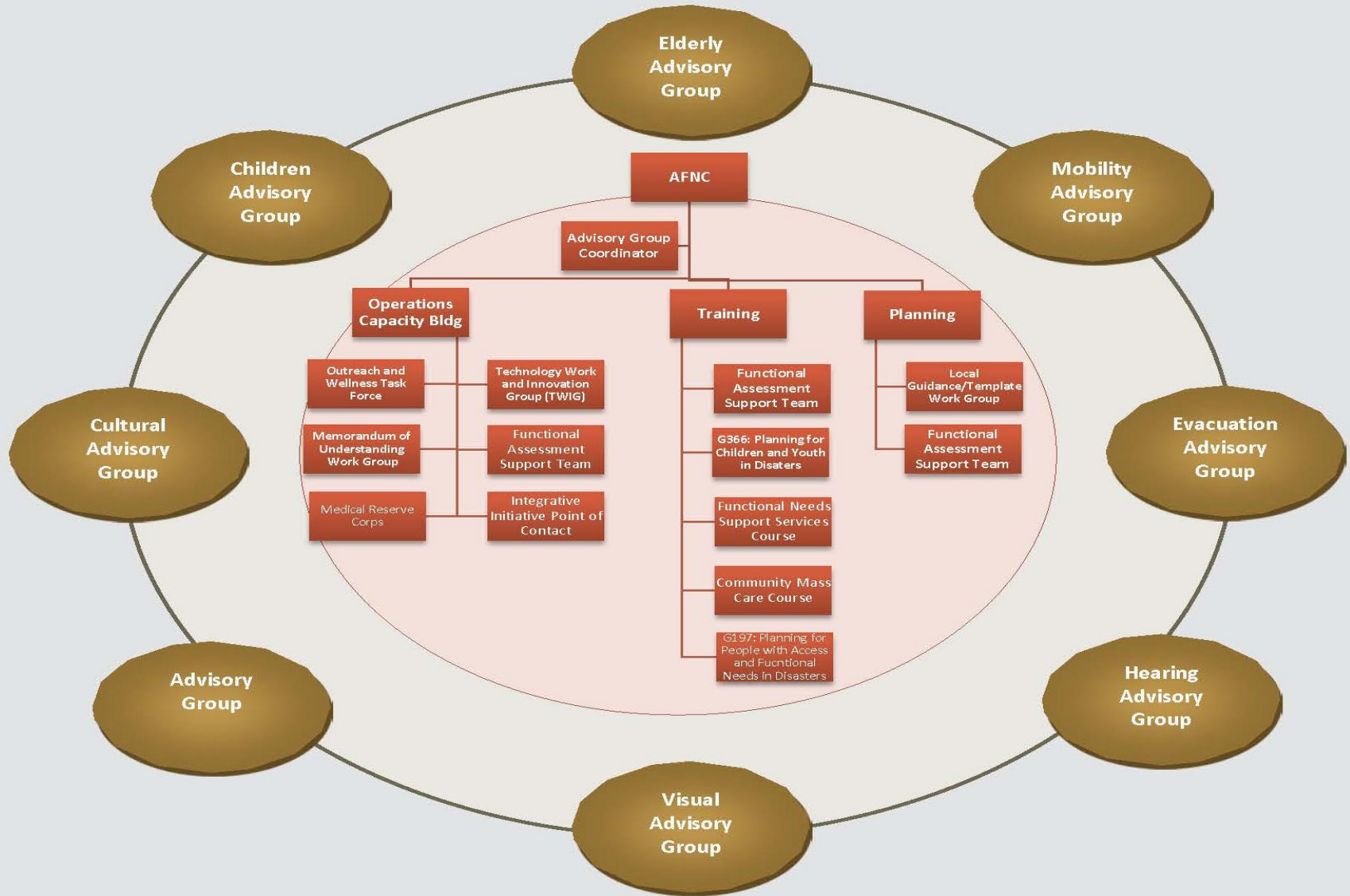
- Reviewed FEMA Guidance
- Attended FEMA training on the FNSS Guidance in July, 2010
- Created an Ad Hoc Committee of the State Mass Care Committee to explore integration considerations.
- Attended Getting Real Conferences hosted by FEMA's Director of the Office of Disability Integration and Coordination
- Encouraged local emergency managers to attend FEMA offered webinars on the FNSS Guidance.
- Held a Mass Care Conference for local emergency managers heavily focused on FNSS in the fall of 2010.
- Explored California's Functional Assessment Support Team (FAST) Model and held a Train-the-Trainer session to build capacity for developing FAST teams within the state.

# Gaining Momentum

## 2011

- Formed Access and Functional Needs Committee
- Adopted FAST concept and developed partnerships with the Missouri Centers for Independent Living
- AFNC became a full committee under the Missouri Governor's partnership

# Today



# Accomplishments

- Created sustainable partnerships with established MOUs
- Adopted FAST concept and developed SOGs, training and sustainable deployment mechanisms
- Developed invaluable partnerships with key access and functional needs stakeholders
- Adopted national level trainings and retooled them to Missouri specifications
- Developing a multi-functional “Ready in 3” app with access and functional needs specific information
- Provided a platform to localize planning, training and other access and functional needs efforts



**Justin Sorg**

Emergency Services Planning and Exercise Program Manager

Mid America Regional Council

**LOCAL AND REGIONAL  
INCLUSIVE PLANNING**



# Overview of the Kansas City Region

- 1.9M people in 9 counties and 119 cities
- In 2002, The Regional Homeland Security Coordinating Committee (RHSCC) formed to enhance capabilities to prevent, protect, respond to and recover from a broad range of threats and hazards by strengthening relationships between jurisdictions and across disciplines
- MARC, as the Metropolitan Planning Organization for Greater KC, supports a number of initiatives including emergency services and homeland security.



# Inclusive Planning for Functional and Access Needs

- Recognition within the KC Region that individuals with functional and access needs have challenges that may not always be supported by “traditional” response and are often disproportionately adversely affected in disaster situations
- For the past 10 years, Region has undertaken various projects to incrementally address challenges with AFN planning.



# Prior Planning Projects

- **“Special Needs” Research Project**

**Goal: provide more detailed understanding of:**

- Economically disadvantaged; Limited language competence, Disabled; Geographically/culturally isolated; Age vulnerable
- Establish an Advisory Panel focused on improving communications with special populations prior to and during emergencies. Develop a database of trusted sources for each identified special population segment.

- **Oxygen Dependency Pilot Project**

**Goal: develop a research methodology for other population segments**

- Collection of survey data that grounds emergency preparedness assumptions regarding oxygen suppliers, service providers and oxygen users.

# Why is Inclusive Planning so Hard?

- Because it's not easy. No single entity can plan for the diverse needs of 40-60% of the population
- “Access and Functional Needs” is often expressed as a separate planning issue, when really it should be an integrated consideration into plans
- Difference between ADA compliance and meeting unmet “other” access (e.g. limited English proficiency) needs
- Federal guidance can be confusing:
  - “Do you have written procedures to ensure that your community evacuation plans enable people with a wide variety of disabilities to safely self-evacuate and, for those who cannot self-evacuate, to receive evacuation assistance?” (ADA Title II, Chap 7 Checklist, 2007)
- Lack of resources and unrealistic expectations of local government
- Personal experiences matter and planners can often be myopic to their own frame of reference
- Public, in general, disinterested in emergency preparedness

# Mental Health and Functional and Access Needs Committee

- Formed to incorporate the “whole community” into planning efforts, built on existing Mental Health Committee.
- Mission: Develop and expand a **network** of subject matter experts, community organizations, advocacy groups, government agencies, individuals with mental health, functional and/or access needs, to identify the challenges faced by those with mental health and functional and access needs during times of disaster or emergency. Devise plans, procedures, guidelines and resources to overcome those challenges and ensure equal access to goods and services for the whole of the community.

# Agencies/Organizations who have participated on the Committee

- American Red Cross
- Johnson County Mental Health
- Kansas City, Mo. Emergency Management
- Coalition for Independence
- Kansas Department of Children and Families
- FEMA R-VII
- SEMA
- MODHSS, Division of Senior and Disability Services
- The Salvation Army
- Family Support Division, MDSS
- Rehabilitation Services for the Blind
- KCMO Health Department
- Kansas City Area Blind Amateur Radio Club
- National Federation for the Blind
- KS Commission for the Deaf and Hard of Hearing
- Platte County Emergency Management
- The Whole Person
- United Way GKC 2-1-1

# A little story...and what not to do when hosting an inclusive planning meeting.

- Don't let uncertainty be a barrier to engage persons with disabilities in the planning process
  - Accommodation is a two-way street
- Interior accessibility does not always equal exterior accessibility.
- Don't forget to get meeting materials in Braille.
- Outcome of inclusive planning: Perspective



# Getting Started

- The MHFAN committee looked at recommendations from previous planning work:
  - Engage access/functional needs populations and their service providers and advocates in emergency planning and education prior to emergencies.
  - City and county Emergency Operations Plans need revision [with respect to access and functional needs].
- We began with emergency preparedness...but was too broad for a new committee
- Shifted focus to a solvable problem: common gap in EOPs -- equipment and support service resources
- Lead to the development of a Functional/Access Needs Resource Directory





















