

Community Organizations Active in Disasters



State of Missouri COAD Guidance Manual

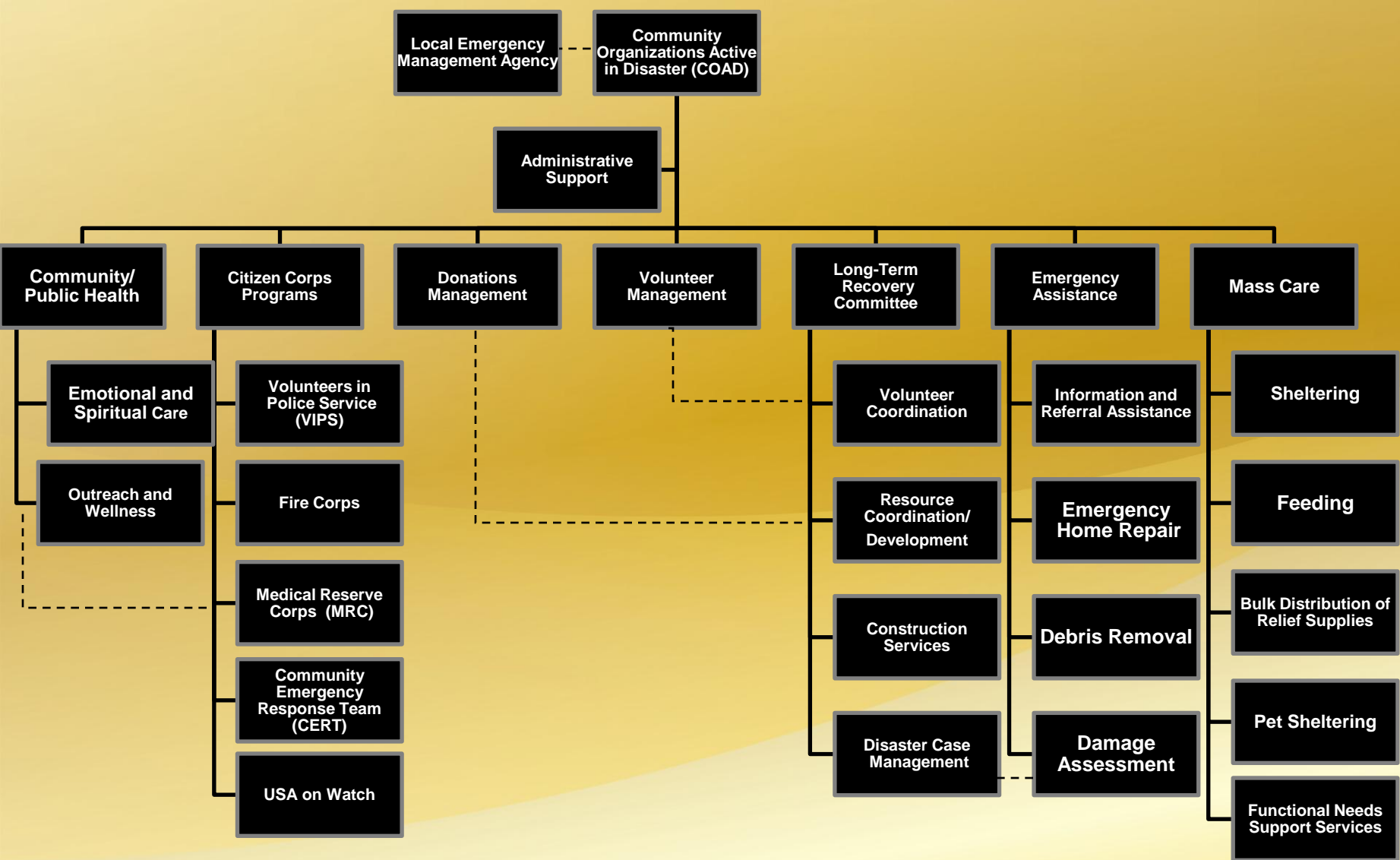
Second Edition, July, 2013

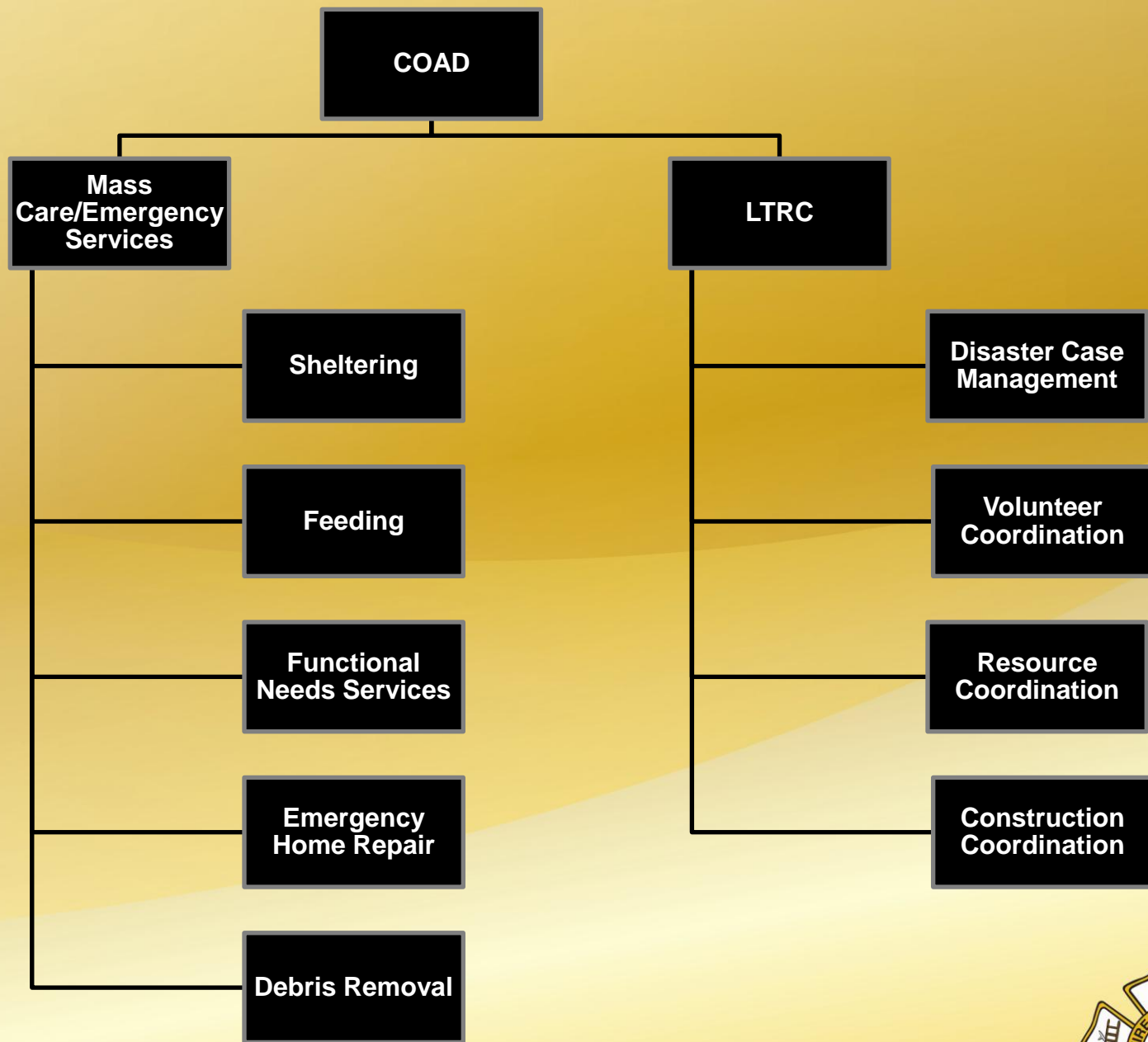


COAD Guidance Manual 2.0

- The second edition of the COAD Guidance Manual emphasizes:
- Partnerships
- Local Capacity Building
- Inclusiveness
- The 4 C's:
 - Cooperation
 - Communication
 - Collaboration
 - Coordination







COAD Guidance Manual 2.0

- Partnerships
- COAD Basic Plan
 - Contacts and References
 - Commonly Used Acronyms
 - Common Terms and Definitions
 - Federal Disaster Programs
- Community/Public Health
 - Emotional and Spiritual Care
 - Outreach and Wellness
- Citizen Corps Programs
 - Medical Reserve Corps (MRC)
 - Volunteers in Police Service (VIPS)
 - Fire Corps
 - Community Emergency Response Teams (CERT)
 - USA on Watch



COAD Guidance Manual 2.0

- Donations Management
- Volunteer Management
- Long Term Recovery
 - Disaster Case Management
 - Construction Services
- Emergency Assistance
 - Information and Referral
 - Emergency Home Repair
 - Debris Removal
 - Damage Assessment
 - Multi-Agency Resource Center (MARC)
- Mass Care
 - Sheltering
 - Feeding
 - Bulk Distribution
 - Pet Sheltering
 - Functional Needs Support Services



COAD Guidance Manual 2.0

- Used by local emergency managers and community groups to develop COADs.
- Used as the basis of a USDA-NIFA (National Institute of Food & Agriculture) grant awarded to the University of Missouri Extension.



COAD Guidance Manual 2.0

– Phase I

- Serve as a guidance document to promote establishment of COADs
- Outline the:
 - Function
 - Purpose
 - Scope
 - Structure
 - Suggested lead and support agencies/training opportunities
- Webinar training – 4 sessions Jan – Mar 2014
- Evaluation due April 2014



COAD Guidance Manual 2.0

– Phase II

- COAD Manual tested through In-Box exercise the entire month of April.
- State Extension Service personnel from MO, IL, IN will use manual during exercise:
 - To make collaborative decisions within their state about emergency human services & disaster recovery issues and,
 - How the University Extension system will support disaster recovery.
- Evaluation due July 2014
- Final evaluation due September 2014



COAD Guidance Manual 2.0

RELEASE DATE:

JANUARY 2014



COAD Panel

- **Conne Burnham** (Moderator)
Exercise and Evaluation Development Specialist
University of Missouri Extension
- **Bill Rose-Heim**
Northwest Area Minister
Christian Church (Disciples of Christ) of Mid-America
- **Kyle Schott**
Regional Director
Catholic Charities of Southern Missouri
- **Steven Shaw**
Director
Audrain County Emergency Management
- **Michelle Kidwell**
Director
Callaway County Emergency Management

