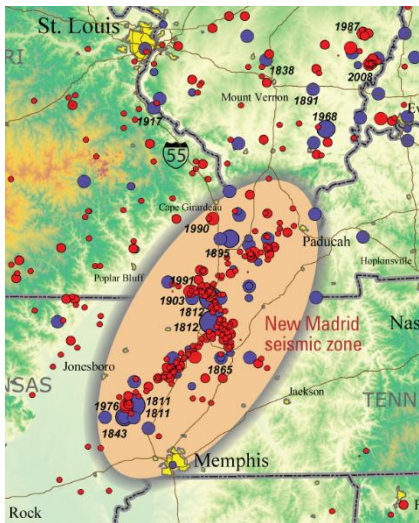


Are your schools earthquake-ready?



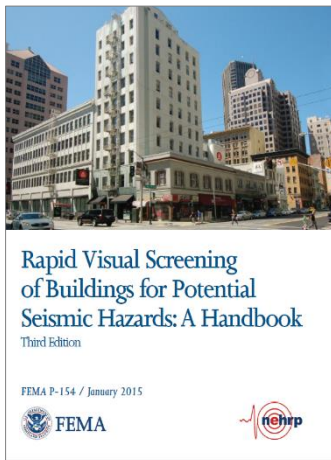
Missouri is home to the New Madrid Seismic Zone – the most active earthquake system east of the Rocky Mountains. This seismic zone produced at least three M7.0 or greater earthquakes in the winter of 1811-12, along with thousands of aftershocks. New Madrid continues to produce nearly 200 earthquakes per year, with a 40% probability of a M6.0 or greater within a 50 year window of time. Studies show that a repeat of the 1811-12 earthquakes could:

- Impact 2 million people, injuring around 85,000
- Damage more than 700,000 buildings, including 1,300 schools with significant damage
- Create widespread utility/lifeline outages
- Cause more than \$200 billion in damage

Get a free on-site evaluation...

The Missouri Seismic Safety Commission is leading a program to improve earthquake safety and readiness in Missouri schools. The Commission works with structural engineers, architects, and construction professionals to conduct “rapid visual screenings” for potential seismic hazards of school buildings. These screenings:

- Are provided free of charge to participating school districts
- Help determine earthquake-readiness of school buildings and district facilities
- Provide preliminary recommendations to improve school safety
- Can be used to prioritize structural retrofit or non-structural improvements
- Use FEMA-approved methodology known as “FEMA P-154”



This program is supported by:



For more information on the Rapid Visual Screening program, contact Mr. Jeff Briggs with the Missouri State Emergency Management Agency at (573) 526-9232 or jeff.briggs@sema.dps.mo.gov.