

State Emergency Management

**COAD -
Community
Organizations
Active in
Disasters.**



State Emergency Management Agency

COAD (Community Organizations Active in Disaster)

Community Organizations Active in Disaster



Presenting Team Introductions



State Emergency Management Agency



The State Emergency Management Agency's mission is to help our fellow Missourians **prepare** for, **respond** to, and **recover** from **all emergencies**. Each step will be guided by our core values of **Respect**, **Integrity**, **Trust**, **Honesty** and **Compassion**.



Stronger Community – Better Response! ³



State Emergency Management Agency

Stronger Community – Better Response!





Community Organizations Active in Disaster (COAD)

Direction and Coordination

(State Statute) "The chief elected officials for each jurisdiction have overall responsibility for emergency management activities.

The goal for a COAD is to have a coordinated management system among all affected jurisdictions within a county that support emergency human services."

(Mass Care/Emergency Assistance Functions)





Community Organizations Active in Disaster (COAD)

Key Tenets

All disasters start locally and end locally

- ❖ Established locally to bring together organizations that collaborate and help coordinate emergency human services

Invest in PEOPLE and Relationships

- ❖ Can address critical issues associated with agriculture and rural or sparsely populated communities *(Regionally)*





Community Organizations Active in Disaster (COAD)

Work together proactively to:

- ✓ **Support Local Emergency Management**
- ✓ **Reduce risks and vulnerabilities**
- ✓ **Build capacities**
- ✓ **Strengthen connections**





Community Organizations Active in Disaster (COAD)



Bringing people and organizations together to develop the ability to:

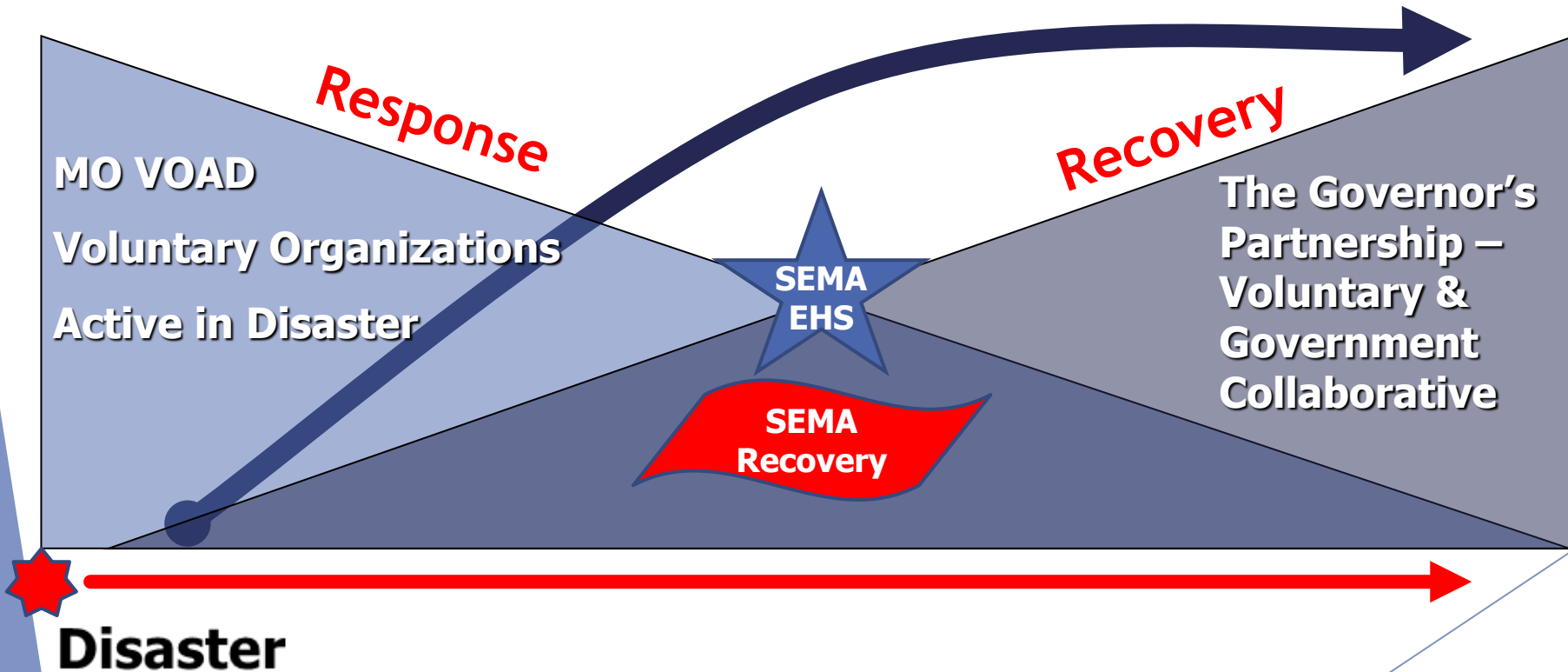
- ✓ **Think critically**
- ✓ **Solve problems**
- ✓ **Take action**





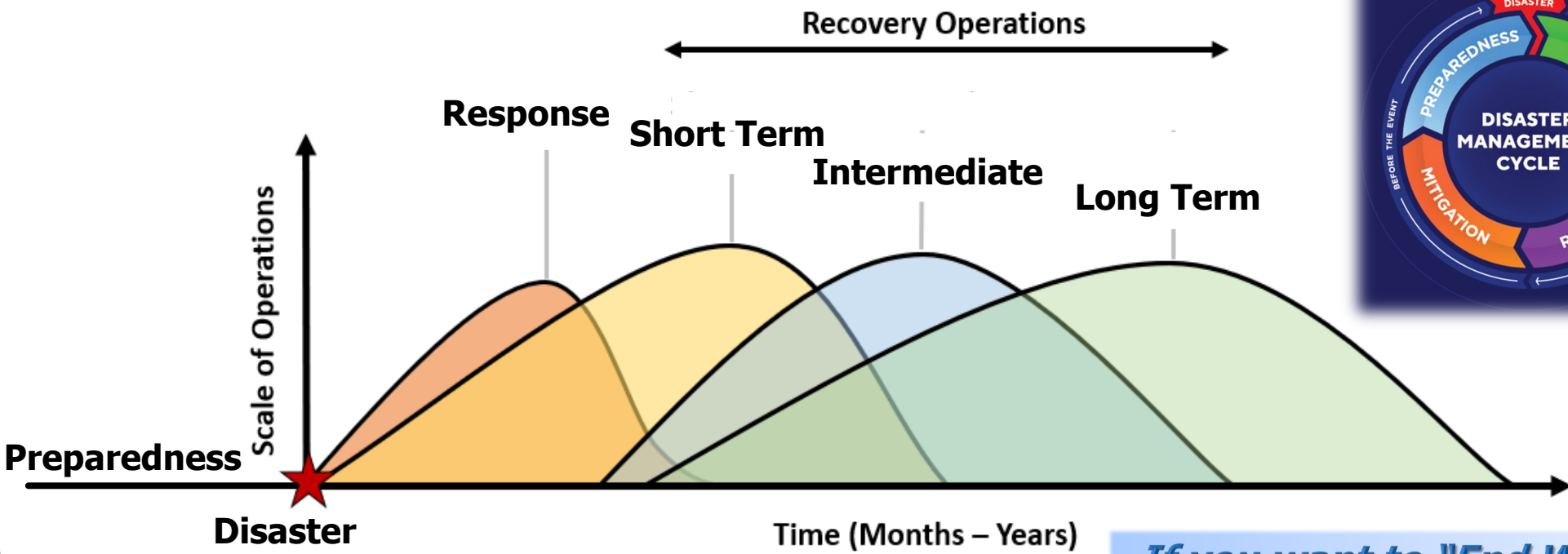
Community Organizations Active in Disaster (COAD)

Long Term Recovery Group/Committee (LTRG/LTRC) – **Lead to or be a part of:** COAD





Community Organizations Active in Disaster (COAD)



If you want to "End Well" One must "Start Well"

National Response Framework NRF (ESF's)

National Disaster Recovery Framework NDRF (RSF's)





Community Organizations Active in Disaster (COAD)



EMERGENCY MANAGEMENT

Incorporate
Corrective
Actions with all
Partners

What didn't
work/find
and apply
Corrective
Actions



ESF'S

RSF'S





Community Organizations Active in Disaster (COAD)

Key Tenets

- ✓ Can make our communities **safer, stronger**, and more prepared to respond to and recover from disasters
- ✓ *Encouraged to demonstrate the four core principles as established by the VOAD movement (Cooperation, Communication, Coordination, Collaboration)*
- ✓ Based on FEMA's **Whole Community Concept**
- ✓ *Working relationships are vital to success*





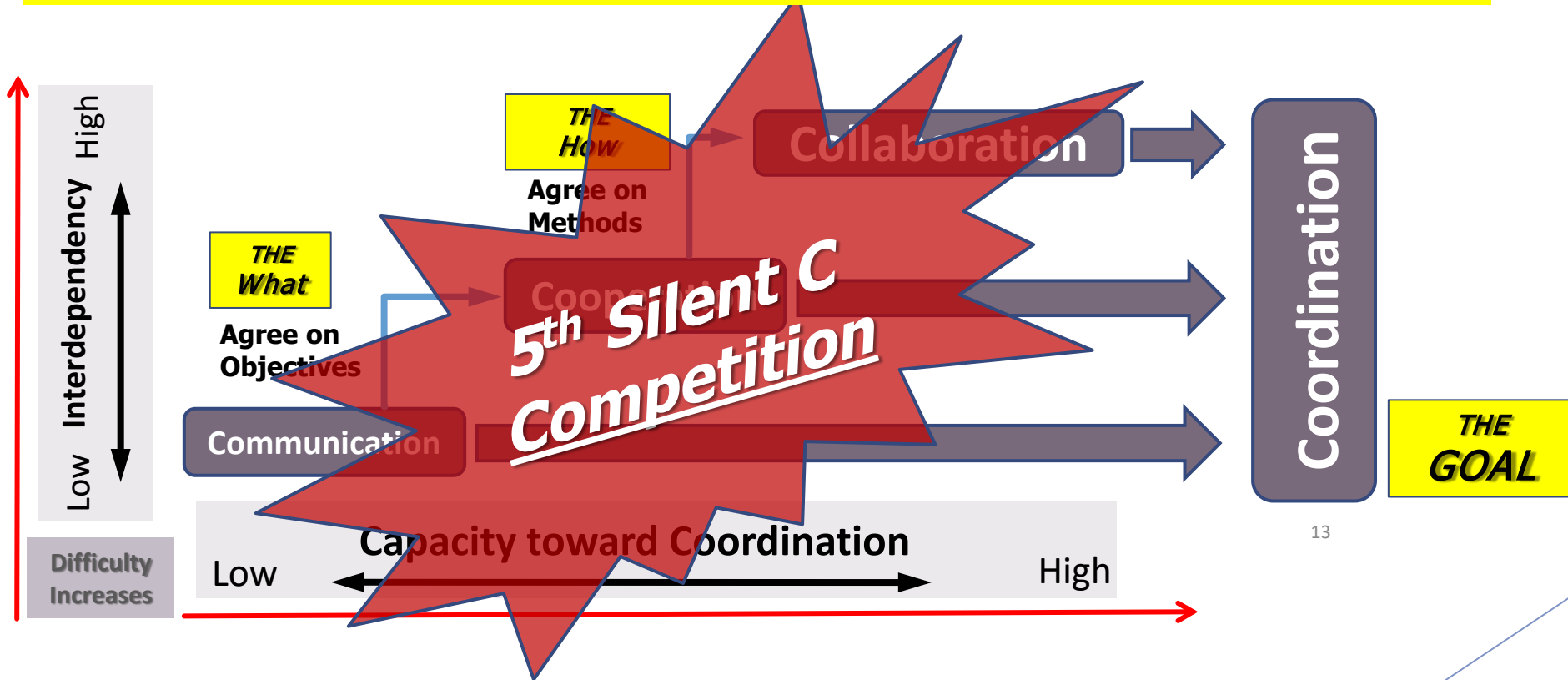
Jamison Day
Supply Chain
Logistics - LSU

4-C's = Communication/Cooperation Collaboration/Coordination

"The What" & "The How" of what we do!



4 C's Run Successfully/Fueled by 6th C - Compassion



Illustrations: Joe Walsh – Eagles / The 6 & 9 View





Community Organizations Active in Disaster (COAD)

Key Tenets

COAD = Community Resilience

- ✓ The ability of a community to withstand, respond to, and recover from a disaster quickly. (relative term)
- ✓ The ability of individuals to act quickly in the face of disaster *and to sustain themselves and support those around them in the absence of outside assistance.*





Community Organizations Active in Disaster (COAD)

Key Tenets

- ❖ Active in all phases of disaster: mitigation, prevention, preparedness, response and recovery
- ❖ Composed of representatives from public, private, volunteer, faith-based, and nonprofit agencies and organizations. Think outside the box!
- ❖ The goal is to strengthen disaster coordination by sharing programs, policies, information, joint planning, and training
- ❖ Stays connected with city, county, state, regional, and national emergency support organizations
- ❖ Saves money and time with faster recovery
- ❖ Designed to be a KEY resource to local emergency management and to the community





Community Organizations Active in Disaster (COAD)

COAD Guidance Manual-2nd Edition, November 2016

- ✓ **Guidance document to promote community collaboration and community development**
- ✓ **Encourages communities to start the conversation.....including non-traditional programs**





Community Organizations Active in Disaster (COAD)

What's in the Guidance Manual ?

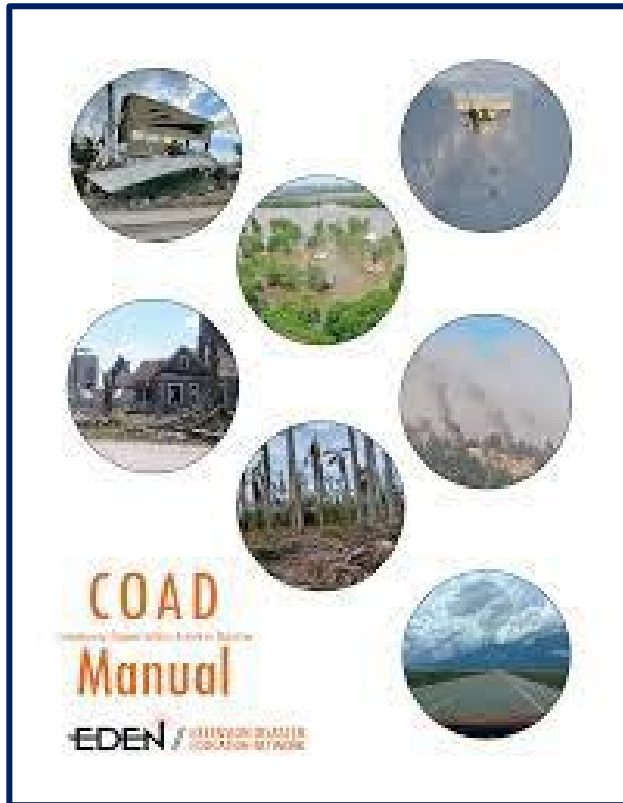
✓ Subjects:

- Community/Public Health
- Partners
- Citizen Corps Programs
- Donations Management
- Volunteer Management
- Long-Term Recovery Committee
- Emergency Assistance
- Mass Care
- Spiritual and Emotional Care
- Agriculture and Rural Community





Community Organizations Active in Disaster (COAD)



Eden Network COAD Manual

**University Extension
Missouri
Nebraska
Illinois
Perdue**





Community Organizations Active in Disaster (COAD)

Key Tenets

- Coming together is a beginning.
- Keeping together is progress.
- Working together is success.

Henry Ford





Community Organizations Active in Disaster (COAD)

Community Organizations Active in Disaster



Questions??



For specific COAD Resources, scroll down to "Resources"

- ❖ ["Disaster Leadership Team Resource Library"](#)
- ❖ ["Extension Disaster Education Network"](#)
- ❖ ["National VOAD Resource Library"](#)
- ❖ ["MO COAD Manual"](#)

Scan here or visit sema.dps.mo.gov/programs/emergency-human-services.php
to access resources and more!

