

State Emergency Management

LTRCs –
Long-Term
Recovery
Committee



State Emergency Management Agency

LTRC (Long-Term Recovery Committee)



LONG TERM DISASTER RECOVERY COMPONENTS

MEET BASIC NEEDS

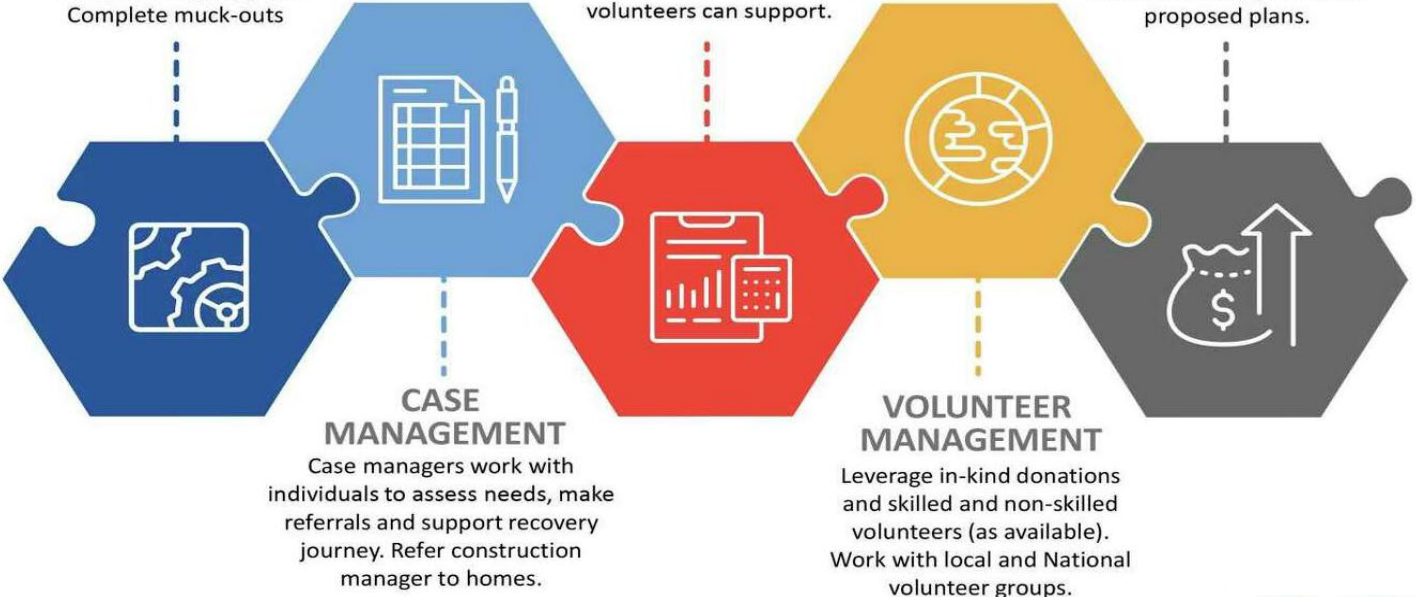
Collect damage data for State/Federal Declaration. Meet basic needs: food, housing, water, cleaning supplies. Complete muck-outs

CONSTRUCTION MANAGEMENT

Inspect homes and develop plan including securing bids, in-kind materials needs and if volunteers can support.

DEPLOY RESOURCES

Funders allocate funds to create maximum impact. Deploy dollars, in-kind and volunteers help, based on proposed plans.



Presenting Team Introductions



DISASTERS AND LONG-TERM RECOVERY

LTRC (Long-Term Recovery Committee)

Disasters: *Declared - Undeclared*

- ▶ **Whether your community experiences a disaster that is yours alone or is federally declared, the response *belongs* to you.**
- ▶ ***Your community always decides what recovery will look like and who will be included.***



State Emergency Management Agency



The State Emergency Management Agency's mission is to help our fellow Missourians **prepare** for, **respond** to, and **recover** from **all emergencies**. Each step will be guided by our core values of **Respect**, **Integrity**, **Trust**, **Honesty** and **Compassion**.



Stronger Community – Better Response! ⁴



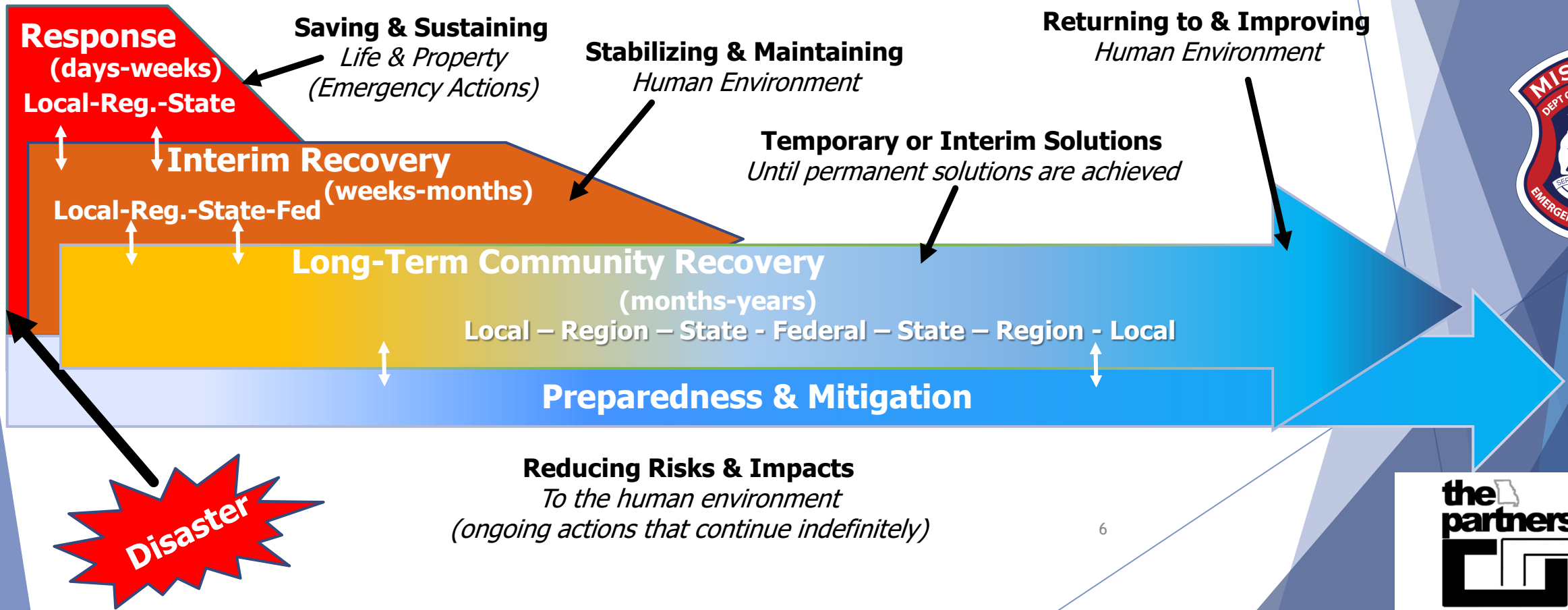
State Emergency Management Agency

Stronger Community – Better Response!



DISASTERS AND LONG-TERM RECOVERY

PHASES OF DISASTERS





Long-Term Recovery Committee (LTRC)

What it is:

Long-Term Recovery is the longest and most emotionally trying phase.

To many in and surrounding your community, 'the disaster was over' before those affected have even begun rebuilding their homes ... or lives.

Long-Term Recovery goes beyond the relief and initial cleanup to the actual rebuilding of homes and lives.





Long-Term Recovery Committee (LTRC)

It is needed when *personal resources, Insurance, government grants, or loans* are insufficient to meet the need

The goal is to help those affected reach a *new normal* - not necessarily to return to pre-event status





Long-Term Recovery Committee (LTRC)

- ❖ Human, material, and financial resources come into a community after a disaster *but will decrease* as public awareness diminishes over time.
- ❖ A strong, well-organized Long-Term Recovery Committee can *ensure that available resources* are utilized to address recovery needs.



Long-Term Recovery Committee (LTRC)

Reasons to Collaborate

- ❖ *It is impossible for one agency to provide all services alone adequately*
- ❖ *Share* experiences and best practices
- ❖ Provide a forum for developing *shared procedures, protocols, and policies*
- ❖ Ensure *equal access* to survivor services



Long-Term Recovery Committee (LTRC)

Advantages for Survivors

- ▶ Coordinated access to agencies simultaneously
- ▶ Benefit of collective problem-solving skills from experienced disaster case managers
- ▶ Benefit of quick_(er) decision-making and commitments from agencies providing services and resources



Long-Term Recovery Committee (LTRC)

Advantages for Agencies

- ❖ Expands opportunity of each agency to assist
- ❖ Best and most extensive use of resources
- ❖ Avoid duplication of benefits
- ❖ Opens each agency's cases to a full range of resources
- ❖ Provide a system for future interaction
- ❖ Identify gaps, problems, and issues
- ❖ Coordinate efforts to save money, manpower, and resources



Long-Term Recovery Committee (LTRC)

Who Makes Up the LTRC ?

❖ Organizations providing resources in the recovery process

3 Ms

MONEY

MANPOWER

MATERIALS



- ❖ Representatives from faith organizations
- ❖ Local agencies where regular programs extend to disaster-related needs
- ❖ Organizations with cases to present for assistance



Long-Term Recovery Committee (LTRC)

Major Elements

At the most basic level, the long-term recovery process involves the following:

- 1. *Identifying*** individuals and families with unmet needs in your community
- 2. *Providing*** disaster case management to prioritize how those needs will be met
- 3. *Delivering*** goods, services, and resources to meet those needs



Long Term Recovery Committee (LTRC) Disaster Case Management (DCM)

****IMPORTANT****

The interaction between disaster case
managers and long-term recovery
committees

is vital in disaster recovery.

Disaster Case Management Program (DCMP)

Is part of FEMA Individual Assistance (IA) Declaration Process



Long-Term Recovery Committee (LTRC)

Disaster Case Managers

The DCM serves as a primary point of contact, assisting Survivors in coordinating necessary services and resources to address their often-complex recovery needs and re-establish normalcy.



Long-Term Recovery Committee (LTRC)

How does an LTRC function?

- ▶ Agency representatives with resources come together, and a case manager presents a survivor project.
- ▶ Representatives will obligate their agency to participate in the project. Resources generally relate to materials, money, and labor.
- ▶ Resources of the collective LTRC may be utilized.
- ▶ Process continues until the project receives enough resources for completion.



Long-Term Recovery Committee (LTRC)

Leadership

May emerge from:

- ❖ Any organization providing resources in the recovery process.
- ❖ Community-based organizations that have extended their regular programs to include disaster recovery needs.
- ❖ Emergency management or government.
- ❖ Faith-based groups and organizations with disaster services.
- ❖ Private sector and civic groups.
- ❖ Religious leaders.
- ❖ *Volunteers with expertise in accounting, legal matters, grant writing, human resources, communications, marketing, building trades, etc.*



Long-Term Recovery Committee (LTRC)

Leadership

- ❖ Members of the governing body should reflect the diversity of the disaster-affected community and should possess leadership skills and the ability to work *cooperatively* and *collaboratively*.
- ❖ Further, these members should have sufficient authority from the organizations they represent to be able to make commitments and speak on behalf of that organization.



Long-Term Recovery Committee (LTRC)

Leadership

- ❖ Determines a system of financial management, reporting, and accountability.
- ❖ Determine if the LTRC utilizes the non-profit status of one of its member agencies for receiving and handling financial contributions (fiscal agent) or if it will apply for its own 501(c) 3 status.



Long-Term Recovery Committee (LTRC)

Leadership

The "governing body" should:

- ❖ Develop and ensure the LTRC adheres to the mission statement.
- ❖ Determine the operational structure for the LTRC.
- ❖ Develop short and long-term goals for the LTRC.
- ❖ Develop operational policies and procedures.
- ❖ Identify and develop resources.
- ❖ Ensure fair and equitable distribution of resources.²¹



Long-Term Recovery Committee (LTRC)

When the work is finished, what's next?

- ❖ Agree that the “mission has been accomplished”
- ❖ Final Evaluation
- ❖ Celebration of Accomplishments
- ❖ Transition to a COAD
(Community Organizations Active in Disasters)



Jefferson City 2019



Long-Term Recovery Committee (LTRC)

“It’s your” LTRC, who’s missing?

The key is to identify stakeholders who are committed to the recovery of their community, and to the long-term recovery process.



Questions??

For specific LTRC Resources, scroll down to “Resources”

- ❖ “Disaster Leadership Team Resource Library link.
- ❖ (40+ Resource Documents)

Scan here or visit sema.dps.mo.gov/programs/emergency-human-services.php
to access resources and more!